

User Manual

I Specification

Model : Z1	
LED : RGB0805	LED Life Span : 50,000hrs
Pixel Resolution : 450*224	Power: 10w-15w
Input Voltage : AC100-240v, 50/60hz	
Content Format : mp4, avi, rmvb, gif, jpg, png	
View Angle : 150°	
Material : ABS+PC+Mctal	LED Quantity : 224pcs
Size : 420*130*110mm	Weight : 1.5kg

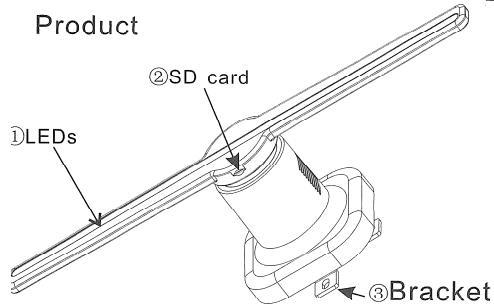
II Feature

- ◆Support common format video, gif and pictures
- ◆Indoor only. If outdoor, it must need a protection cover
- ◆Install at the height of 2.8m+, or it must need a cover
- ◆Product software in the memory card
- ◆Software compatible with Windows XP/Windows 7/Windows 8/Windows 10

Warning
 Do not disassemble if non professional
 Do make sure the device is installed on the place not touchable, or it must need a protection cover
 Do make sure the screws and bracket are firmly fixed
 Do not touch the hologram display when it works.

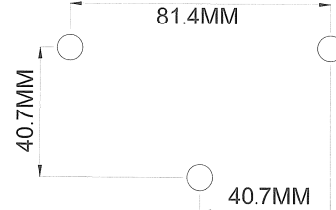
Thanks for purchasing our hologram display, please read the user manual for the information on installing and operation

Product

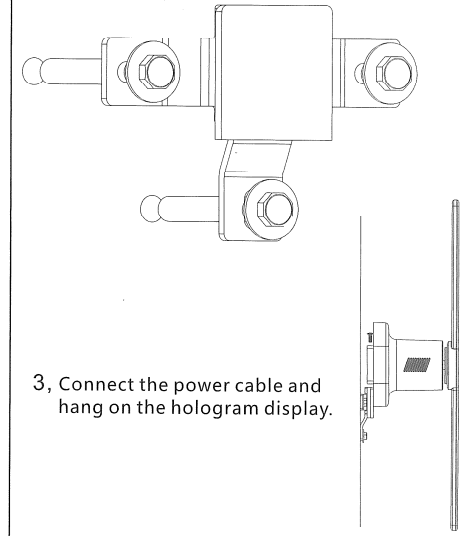


Installation

1, Drilling 3 holes on the wall as diagram bellow, hole size 8MM.



2, Mount the bracket on the wall by screws.



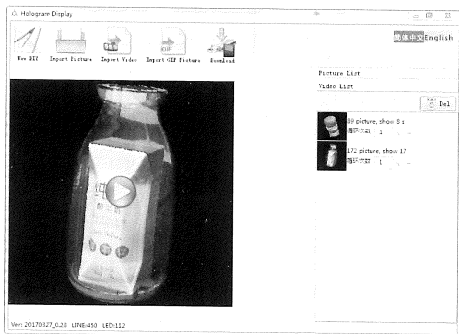
3, Connect the power cable and hang on the hologram display.

v Software

Name : Hologram Display

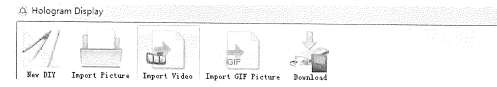
Software Interface Instruction :

- Drawing picture
- Import JPG, BNP format picture
- Import avi, mp4, rmvb format video
- Import gif picture
- Download content to the SD card

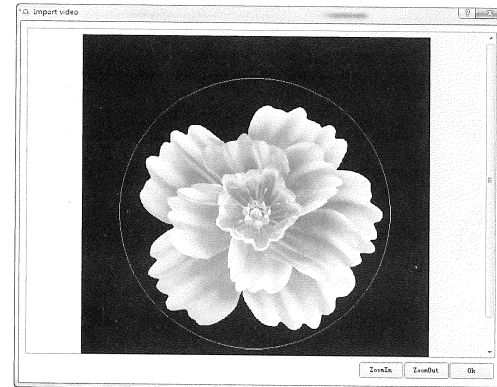


Note The software and instruction video in the memory card

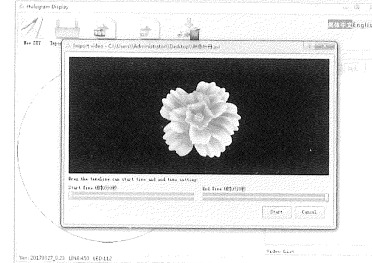
VI Software manual



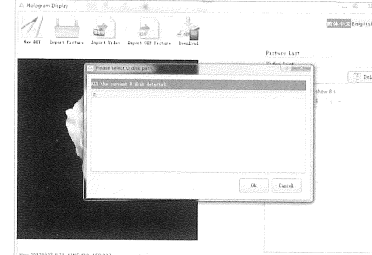
1. Click "import video" to choose upload content, Format: MP4, AVI RMVB.



2. Click "zoom in" or "zoom out" to adjust the display size.
3. Click "OK".



4. Choose the "start time" and "end time", and press "OK".



5. Download the content to SD card after the video import done and rename this new video bin file.
6. Insert the SD card to Hologram Display.

WARRANTY CARD

Name :
 Purchase Date :
 Address :
 Tel :
 Description :

This product purchased by you to be free from defects resulting from the use of faulty parts or poor workmanship during its manufacture subject to terms of the limited warranty ("warranty") given below.

1. We will repair or replace any defective parts and correct any problems resulting from poor workmanship free of charge.
2. The claim will have to be made within the warranty period.
3. This warranty shall be rendered null & void if:
 1. The product is physically damaged.
 2. The product is installed, maintained and operated in ways other than as recommended by us.
 3. The product is faulty or damaged due to other occasional problem that not related to manufacturing.
 4. The warranty card, serial number or barcode have been removed or tempered with .stickers have been removed or tampered with.